

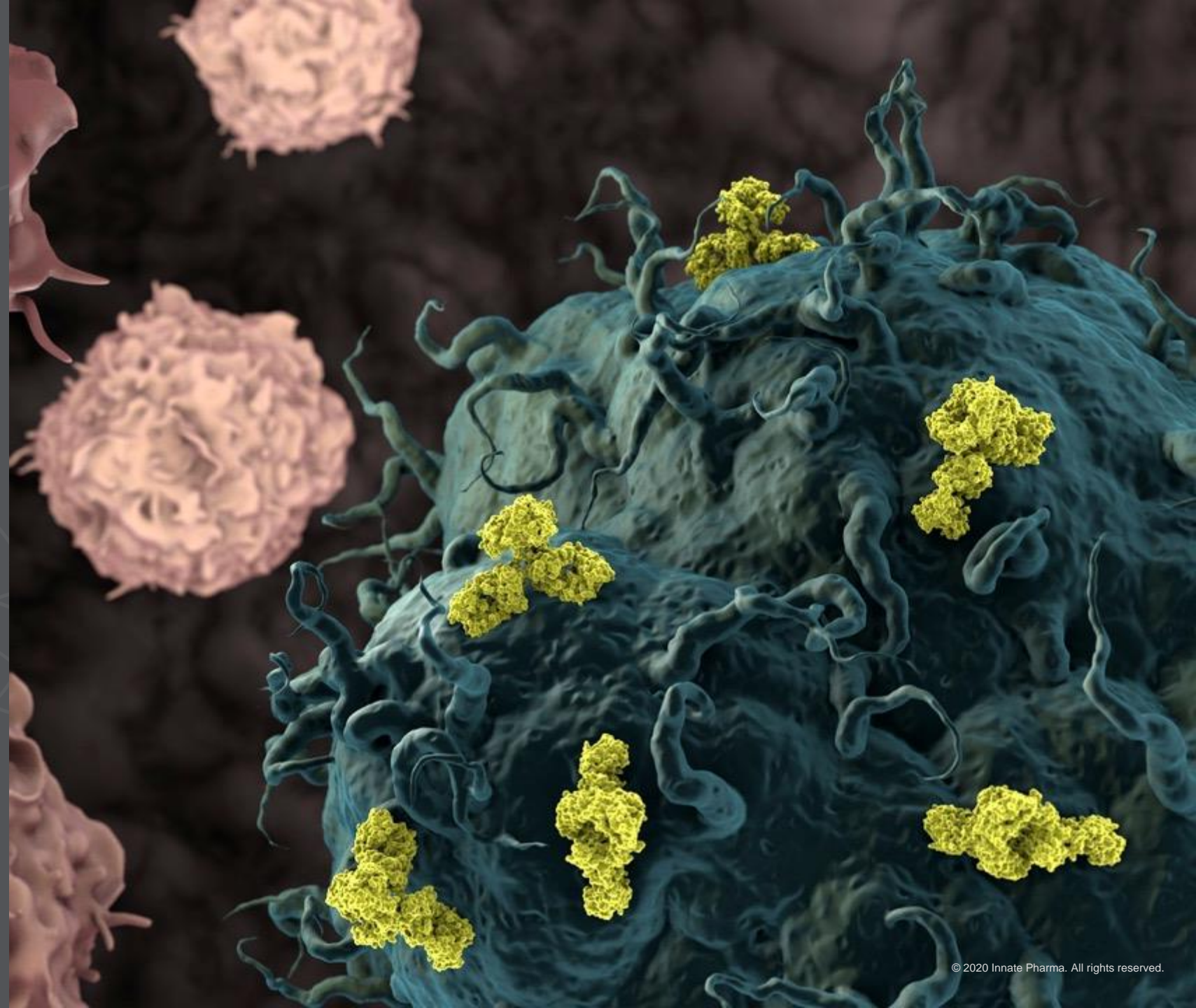


Company Overview

June 2022

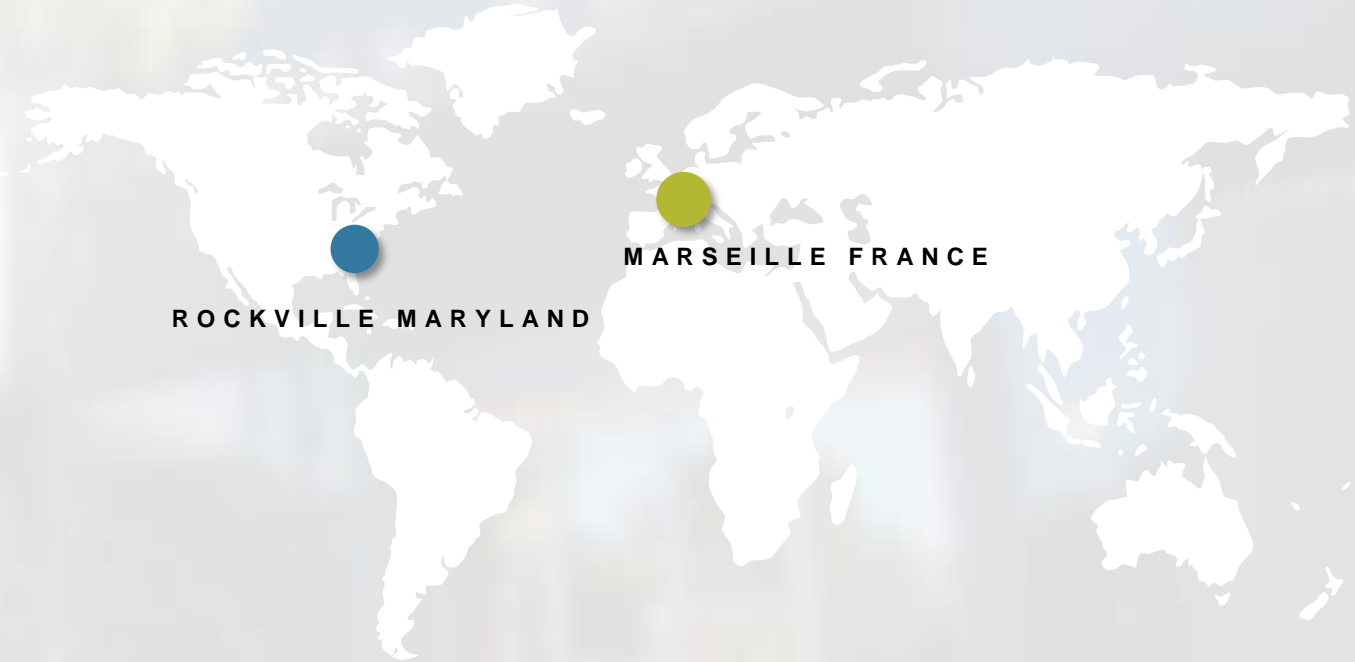
PARIS: IPH.PA

NASDAQ: IPHA



A Leading Company in the Field of Innate Immunity

- Global, clinical-stage oncology-focused biotech company.
- Scientific excellence in the field of innate immunity with expertise in natural killer cell biology and antibody engineering.
- Focused pipeline of antibodies, including several potentially first-in-class clinical and preclinical candidates in cancers with high unmet medical need.



Founded: 1999

Paris Euronext listing: 2006

Nasdaq listing: 2019

Scientific Innovation Drives Our Strategy

We aim to harness our scientific know-how in innate immunity and antibody engineering to develop oncology products that improve the lives of patients



Drive near-term value with Lacutamab



Advance our innovative R&D pipeline



Build a sustainable business through partnerships

Strong Science + Strong Partnerships = Robust Pipeline

Validated Science
in high-impact publications



Strong Track Record of Collaborations
with industry and academia



Robust Pipeline
with innovative pre-clinical and clinical assets



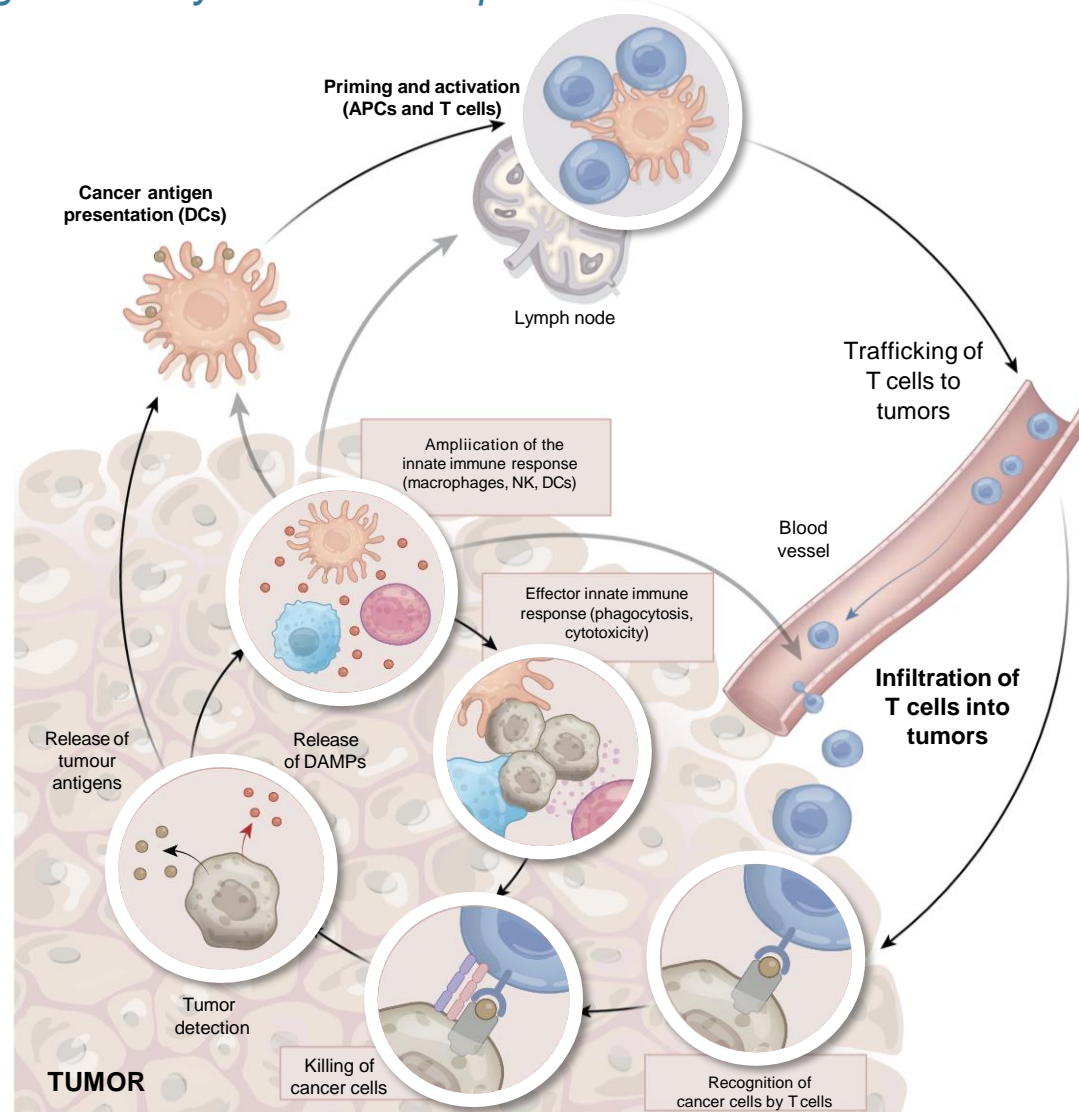
Innate's Approach: Harnessing Innate Immunity in Cancer

Choosing the right targets to leverage the body's immune response

1 Engage NK cells towards tumor
Lacutamab (KIR3DL2)
 (NKp46)


2 Unleash NK cells
Monalizumab (NKG2A)

3 Reverse suppression
IPH5201 (CD39)
IPH5301 (CD73)



Adapted from Demaria et al., Nature 2019

Our Robust Pipeline of Proprietary & Partnered Assets

| Program | Target | Indication | Pre-Clinical | Phase 1 | Phase 2 | Phase 3 | Status |
|--|---------|--|---|---------|---------|---------|--|
| Lacutamab | KIR3DL2 | Sézary Syndrome | TELLOMAK PHASE 2 (FDA FAST TRACK/EMA PRIME DESIGNATION) | | | | Preliminary Phase 2 data expected 2022 |
| | | Mycosis Fungoides | TELLOMAK PHASE 2 | | | | Early data presented Preliminary Phase 2 data expected 2022 |
| | | PTCL (combo with GemOx) | PHASE 2 | | | | Phase 2 start H2 2021 |
| | | PTCL (mono) | PHASE 1b | | | | Phase 1 start H2 2021 |
| Monalizumab* | NKG2A | Post-PDx HNSCC | INTERLINK-1 PHASE 3 | | | | Phase 3 data expected 2022+* |
| | | Unresectable Stg III NSCLC | PACIFIC-9 PHASE 3 | | | | Phase 3 starting |
| | | Neoadjuvant NSCLC, other | NeoCOAST-2 PHASE 2 | | | | Phase 2 study in progress |
| Avdoralimab | C5aR | BP | | | PHASE 2 | | Data expected 2024 |
| IPH5201* | CD39 | Cancer (solid tumors) | | PHASE 1 | | | Data expected 2023 |
| IPH5301 | CD73 | Cancer (solid tumors) | | PHASE 1 | | | Phase 1 study in progress |
|  ANKET™ <small>antibody-based NK cell Engager Therapeutics</small> | | IPH6101** (CD123 tri-specific) | | PHASE 1 | | | IPH6101 Phase 1 study in progress |
| | | IPH62* (tri-specific) | | | | | Progress towards IND-enabling studies |
| | | IPH64** (tri-specific) | Pre-clinical | | | | |
| | | IPH65 (tetra-specific) | | | | | |
| Other preclinical | | IPH25*, IPH26* (Siglec-9), IPH43* (MICA/B ADC), IPH45 | Pre-clinical | | | | |

GemOx: gemcitabine and oxaliplatin; PDX: anti-PD-1/L1; HNSCC: Squamous Cell Carcinoma of the Head and Neck; BP: Bullous Penphigoid; PTCL: Peripheral T Cell Lymphoma; IND: Investigational new drug



www.innate-pharma.com

PARIS: IPH.PA

NASDAQ: IPHA

